

York Technical College

2022-23 Strategic Goals

Enrollment – 6% Annual Increase

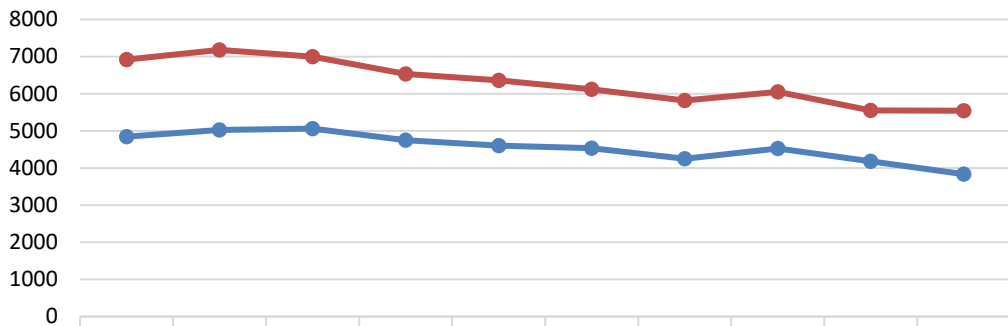
Opening Fall to Opening Fall Success Rate – 70%

Completers – 2% Annual Increase

Graduate Placement Rate – 90%

The primary indicators used to demonstrate that the College is effectively accomplishing its mission – *Transform Lives and Elevate our Communities Through the Fearless Pursuit of Excellence in Student Success* – are enrollment, retention, completion, and placement. These key indicators are a direct reflection of institutional quality; in order to be effective, the College must **enroll** students, **retain** them from semester to semester, **graduate** them from credit programs, and ensure that they then find **gainful employment** or **continue their education** at a four-year college or university. These key indicators are monitored regularly – for overall achievement as well for equity gaps - and related strategies are adjusted as needed for improvements.

York Technical College Fall and Annual Enrollment



	2012-13	2013-14	2014-15	2015-16	2016-17	2017-18	2018-19	2019-20	2020-21	2021-22
Fall	4849	5030	5061	4753	4604	4538	4253	4529	4178	3835
Annual	6,923	7,182	6,996	6,531	6,362	6,117	5,819	6,053	5,554	5,544

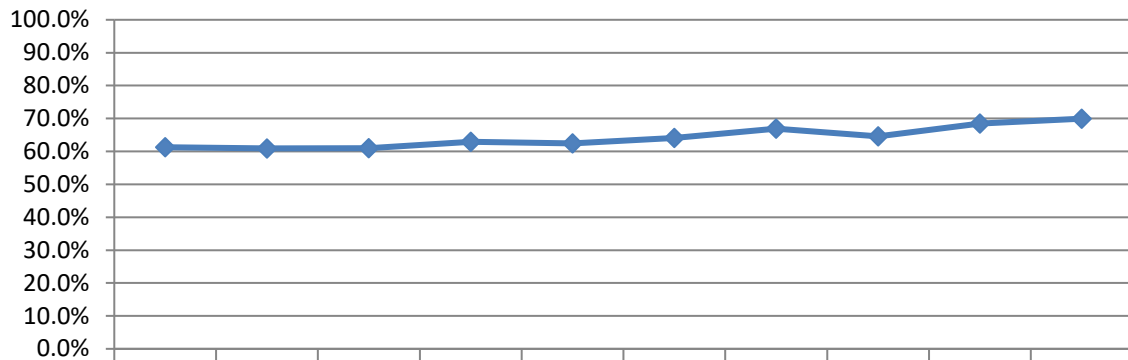
Source: York Technical College Office of Institutional Effectiveness & Research

Benchmark Group: N/A

Description: Fall enrollment includes all credit students enrolled at the opening fall census date; annual enrollment includes the unduplicated count of all credit students enrolled at the opening census dates for fall, spring, and summer semesters.

2022-23 Goal: 6% Annual Increase

Opening Fall to Opening Fall Student Success Rates



	2012-13	2013-14	2014-15	2015-16	2016-17	2017-18	2018-19	2019-20	2020-21	2021-22
Success	61.2%	60.9%	61.0%	62.9%	62.4%	64.1%	66.9%	64.6%	68.5%	69.9%

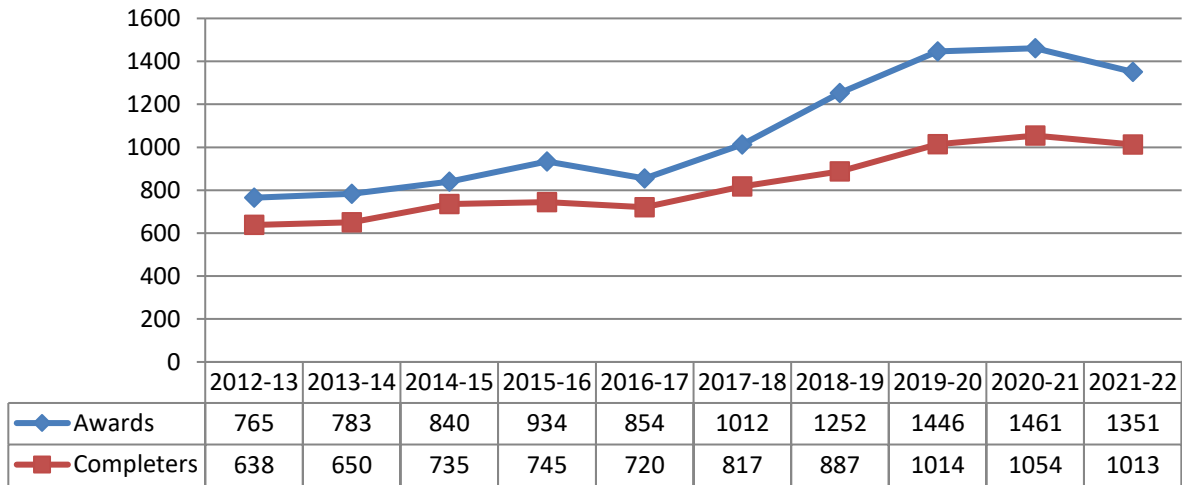
Source: York Technical College Office of Institutional Effectiveness & Research

Benchmark Group: N/A

Description: Opening Fall to Opening Fall Success Rates are calculated by dividing the total number of credit students who either graduated before fall semester, returned in fall semester, or transferred to another institution before fall semester, by the total number of students enrolled at the opening census date of the previous fall semester.

2022-23 Goal: 70%

York Technical College Awards and Completers (July 1 - June 30)



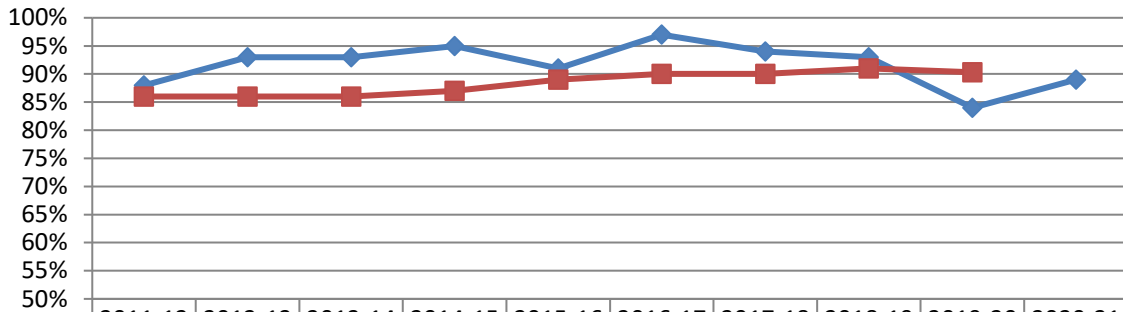
Source: York Technical College Office of Institutional Effectiveness & Research

Benchmark Group: N/A

Description: Completers are the number of students who earn at least one credential (degree, diploma, or certificate) between July 1 and June 30 of a given academic year. Awards are the total number of credentials earned by the completers.

2022-23 Goal: 2% Annual Increase

York Technical College Graduate Placement Rates



	2011-12	2012-13	2013-14	2014-15	2015-16	2016-17	2017-18	2018-19	2019-20	2020-21
YTC	88%	93%	93%	95%	91%	97%	94%	93%	84%	89%
SCTCS	86%	86%	86%	87%	89%	90%	90%	91%	90%	

Source: South Carolina Technical College System Office

Benchmark Group: All 16 South Carolina Technical Colleges

Description: Graduate placement rates are determined by dividing the number of graduates during a given academic year who have reported that they are employed in their field or are continuing their education by the total number of graduates. This is the definition that all South Carolina Technical Colleges use for the Annual Program Evaluation Report and are included as a state-level accountability measure.

2022-23 Goal: 90%