

York Technical College

2018-19 Strategic Goals

Enrollment – 2% Annual Increase

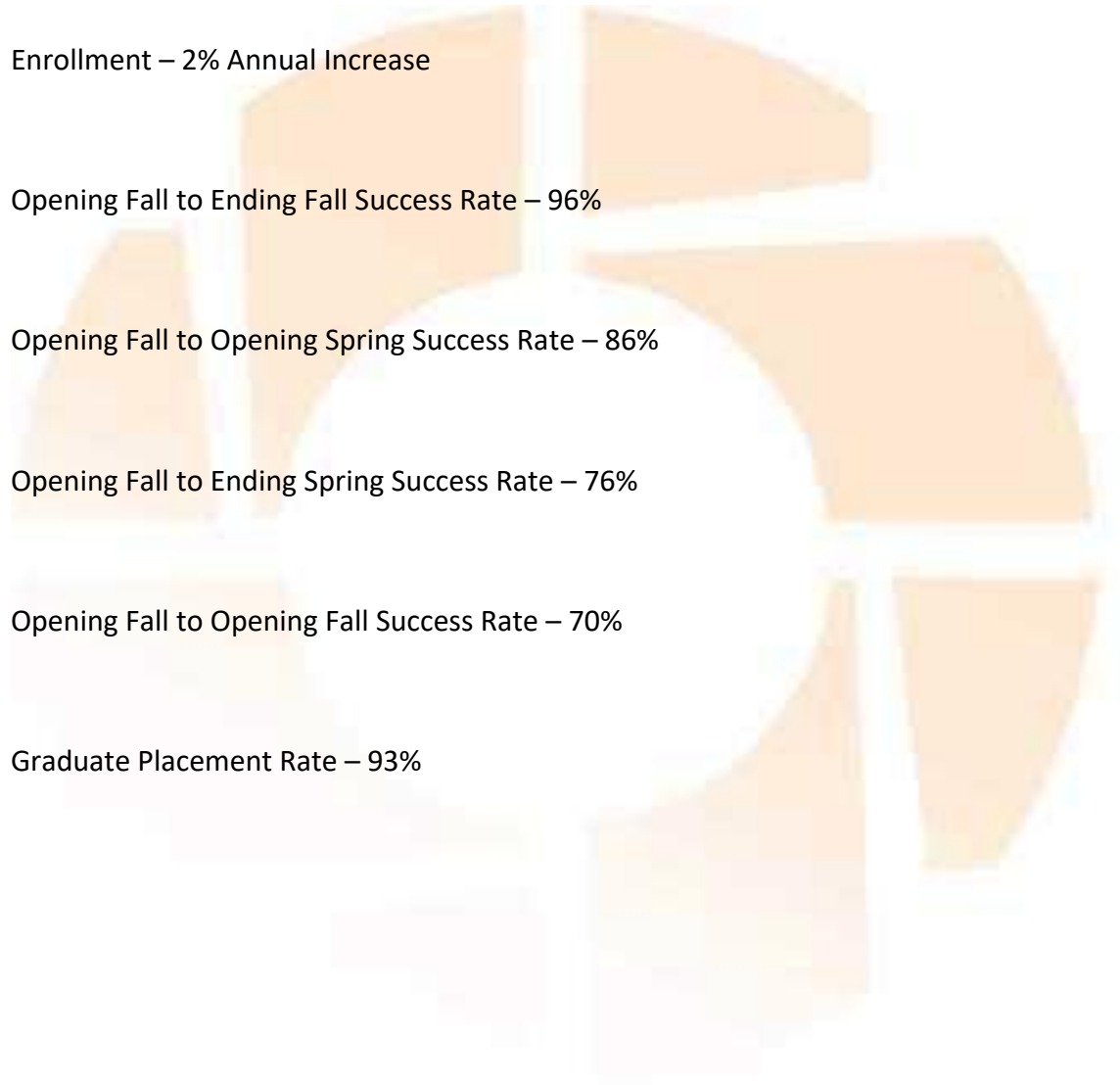
Opening Fall to Ending Fall Success Rate – 96%

Opening Fall to Opening Spring Success Rate – 86%

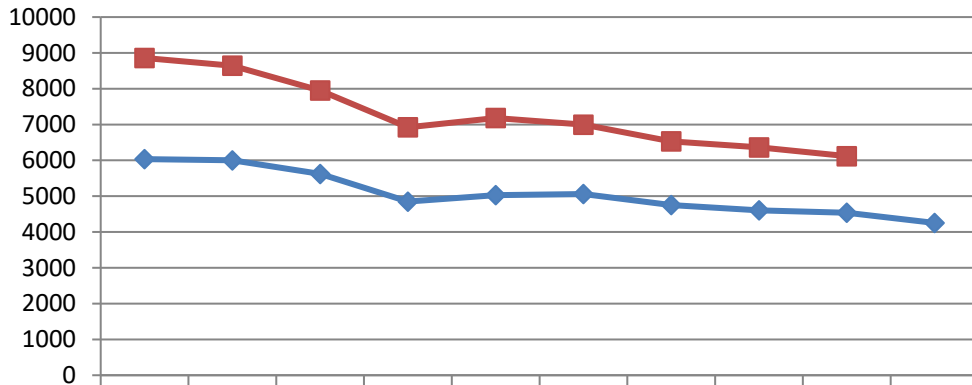
Opening Fall to Ending Spring Success Rate – 76%

Opening Fall to Opening Fall Success Rate – 70%

Graduate Placement Rate – 93%



York Technical College Annual and Fall Enrollment



	2009	2010	2011	2012	2013	2014	2015	2016	2017	2018
◆ Fall	6034	6000	5621	4849	5030	5061	4753	4604	4538	4253
■ Annual	8858	8643	7950	6923	7182	6996	6531	6362	6117	

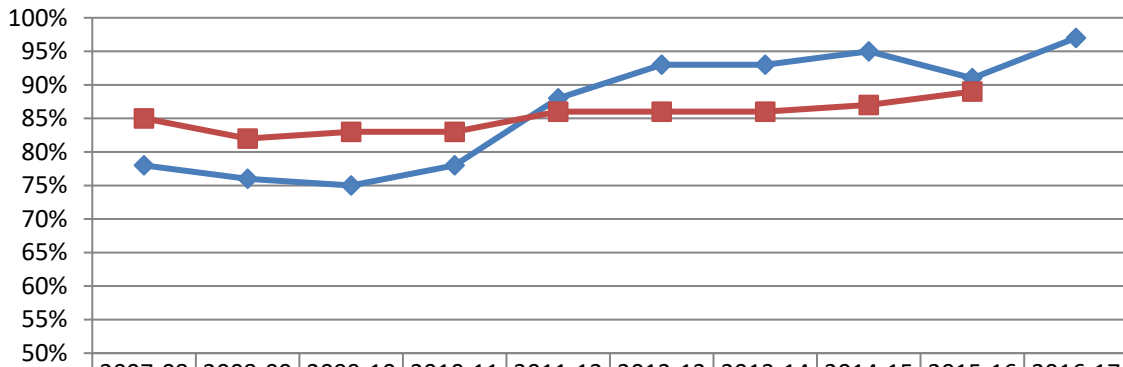
Source: York Technical College Office of Institutional Effectiveness & Research

Benchmark Group: N/A

Description: Fall enrollment includes all credit students enrolled at the opening fall census date; annual enrollment includes the unduplicated count of all credit students enrolled at the opening census dates for fall, spring, and summer semesters.

2018-19 Goal: 2% annual increase

York Technical College Graduate Placement Rates



	2007-08	2008-09	2009-10	2010-11	2011-12	2012-13	2013-14	2014-15	2015-16	2016-17
YTC	78%	76%	75%	78%	88%	93%	93%	95%	91%	97%
SCTCS	85%	82%	83%	83%	86%	86%	86%	87%	89%	

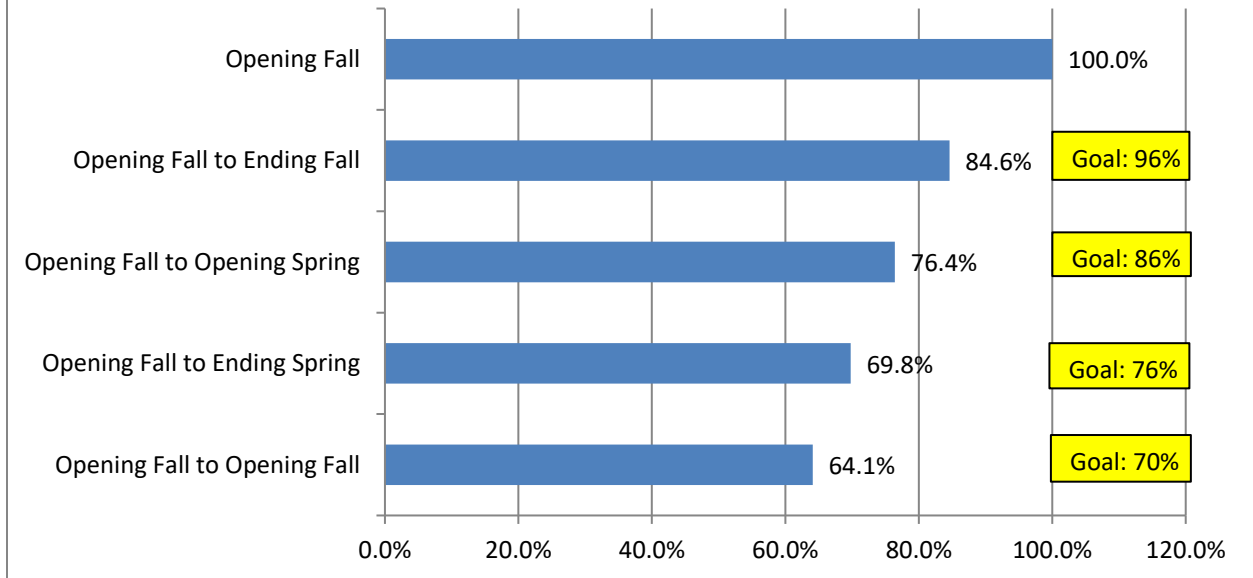
Source: South Carolina Technical College System Office

Benchmark Group: All 16 South Carolina Technical Colleges

Description: Graduate placement rates are determined by dividing the number of graduates during a given academic year who have reported that they are employed in their field or are continuing their education by the total number of graduates. This is the definition that all South Carolina Technical Colleges use for the Annual Program Evaluation Report and are included as a state-level accountability measure.

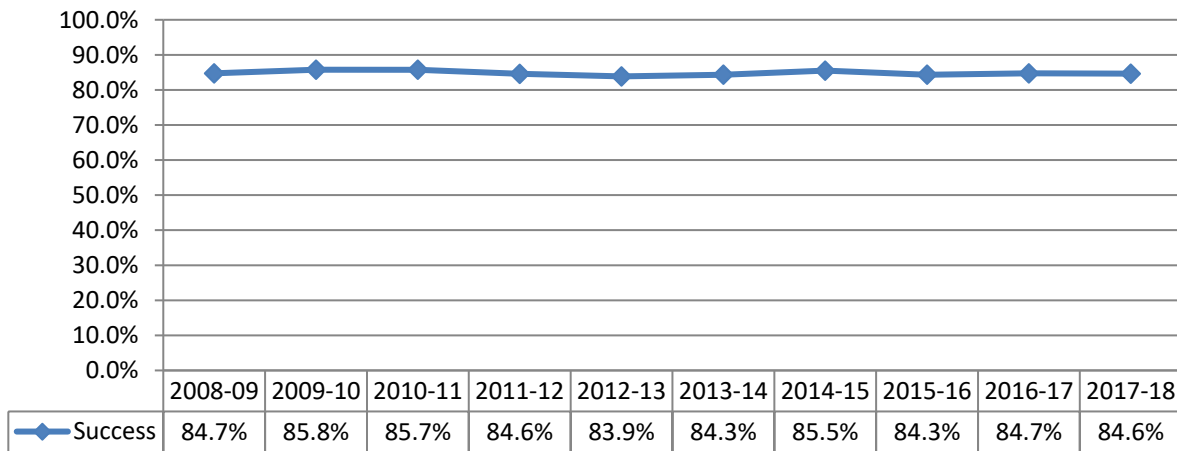
2018-19 Goal: 93%

2017-18 Success Rates w/ 2018-19 Goals



Source: York Technical College Office of Institutional Effectiveness & Research

Opening Fall to Ending Fall Student Success Rates



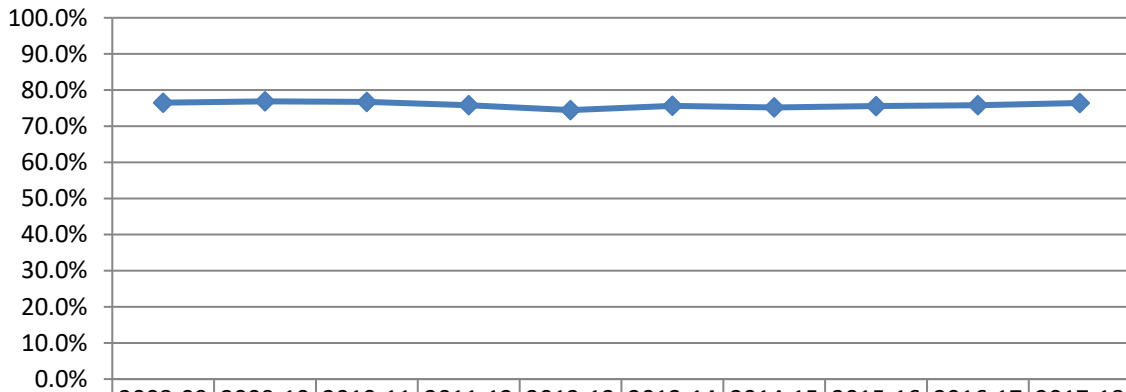
Source: York Technical College Office of Institutional Effectiveness & Research

Benchmark Group: N/A

Description: Opening Fall to Ending Fall Success Rates are calculated by dividing the total number of credit students who earned a minimum of a 'C' or better in at least one course during fall semester by the total number of students enrolled at the opening census date of a given fall semester.

2018-19 Goal: 96%

Opening Fall to Opening Spring Student Success Rates



	2008-09	2009-10	2010-11	2011-12	2012-13	2013-14	2014-15	2015-16	2016-17	2017-18
Success	76.5%	76.9%	76.7%	75.8%	74.5%	75.6%	75.2%	75.6%	75.8%	76.4%

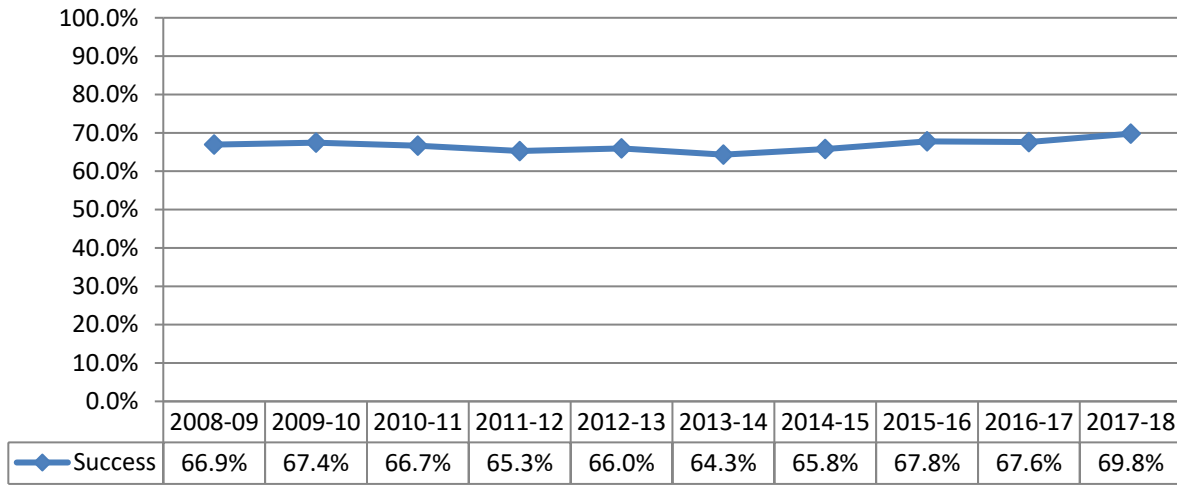
Source: York Technical College Office of Institutional Effectiveness & Research

Benchmark Group: N/A

Description: Opening Fall to Opening Spring Success Rates are calculated by dividing the total number of credit students who either graduated before spring semester, returned in spring semester, or transferred to another institution before spring semester, by the total number of students enrolled at the opening census date of the previous fall semester.

2018-19 Goal: 86%

Opening Fall to Ending Spring Student Success Rates



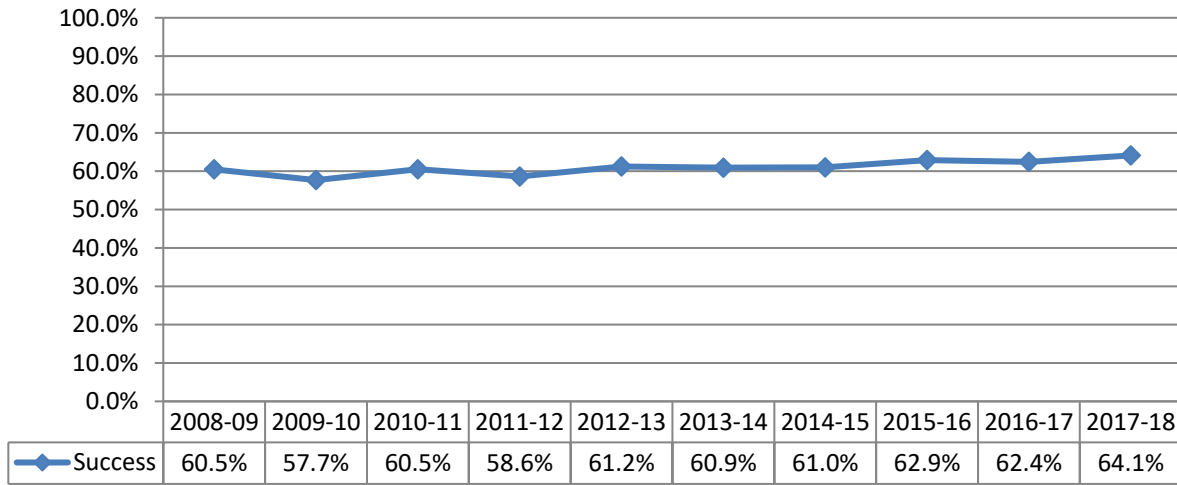
Source: York Technical College Office of Institutional Effectiveness & Research

Benchmark Group: N/A

Description: Opening Fall to Ending Spring Success Rates are calculated by dividing the total number of credit students who graduated before the end of spring semester, or earned a minimum of a 'C' or better in at least one course during spring semester, or transferred to another institution before the end of spring semester, by the total number of students enrolled at the opening census date of the previous fall semester.

2018-19 Goal: 76%

Opening Fall to Opening Fall Student Success Rates



Source: York Technical College Office of Institutional Effectiveness & Research

Benchmark Group: N/A

Description: Opening Fall to Opening Fall Success Rates are calculated by dividing the total number of credit students who either graduated before fall semester, returned in fall semester, or transferred to another institution before fall semester, by the total number of students enrolled at the opening census date of the previous fall semester.

2018-19 Goal: 70%